



PROJECT UNDER REDEVELOPMENT BY



# LUXURY IN THE LAP OF NATURE



KING'S MANOR  
(NEELKANTH PARK CHS)



KING'S MANOR  
(NEELKANTH PARK CHS)

Where modern luxury meets timeless allure. Nestled in the heart of historic surroundings, each apartment in this exclusive residential project is thoughtfully oriented to overlook lush, verdant gardens, fostering a deep connection with nature.

The architecture seamlessly marries contemporary design with the old-world charm of the surrounding neighborhood, creating a harmonious blend of past and present. With every detail meticulously crafted to evoke a sense of tranquility and sophistication, King's Manor offers residents a sanctuary where they can unwind amidst the beauty of nature while indulging in the comforts of upscale living.





Find here,  
unique experience  
of living in a modern  
environment while  
also being in the lap  
of nature





NEELKANTH PARK

KING'S MANDIR  
NEELKANTH PARK GDS

P&G





NEELKANTH PARK

KING'S MANOR

PGO





Grand Welcome Lobby

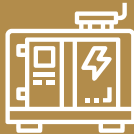
# Amenities



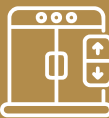
Video Door Phone and CCTV System



Firefighting System\*



Back Up Generator\*



2 High Speed & 1 Service Elevators



All Apartments Facing Garden



7th Floor Boutique Gymnasium\*\*



Easy Connectivity to Eastern Express Highway Sion Chembur Link Road



Stilt Parking

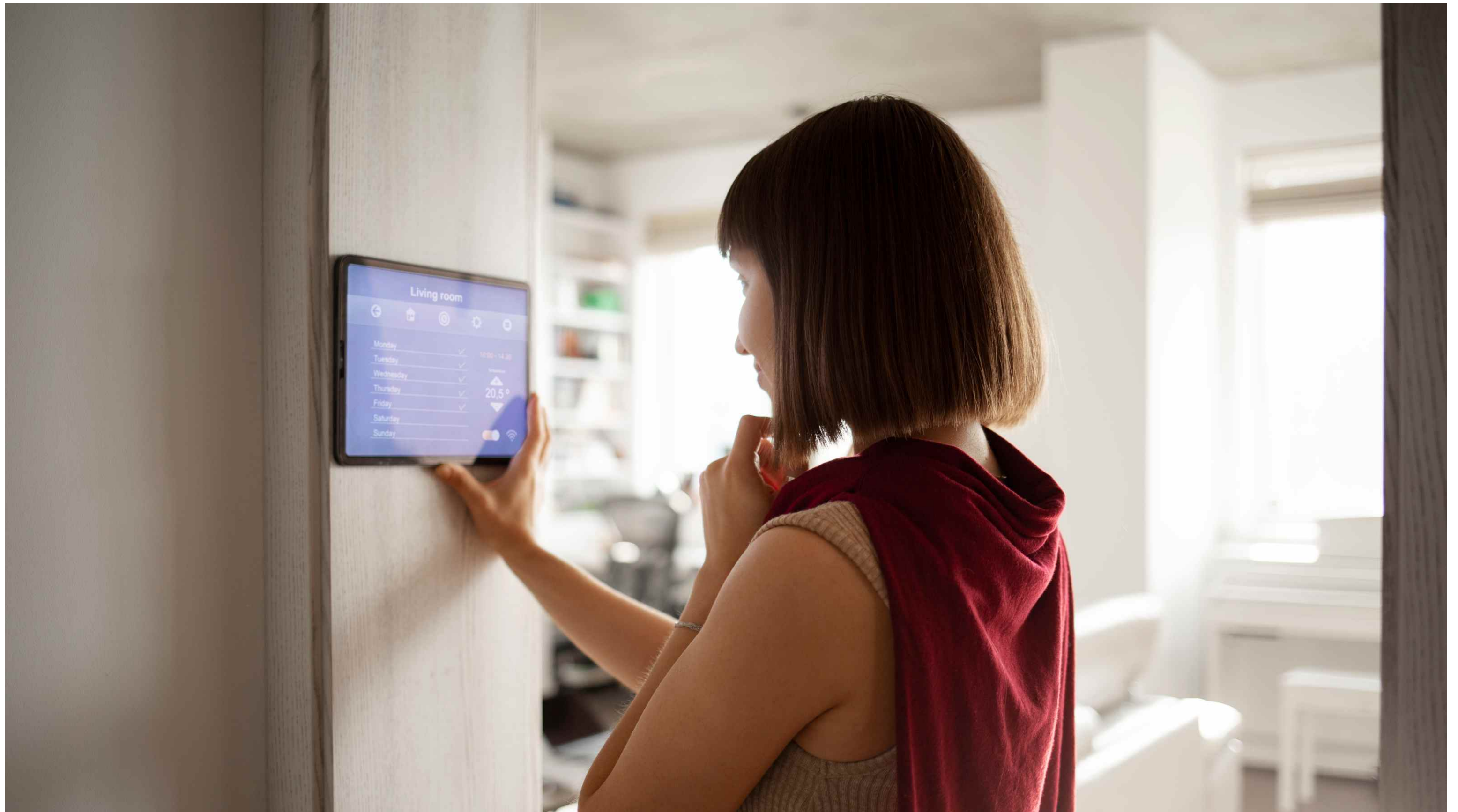
\*Common Area Lighting | \*\*As per MCGM Guidelines





**Sky Deck View**





**Video Phone Door and CCTV System**





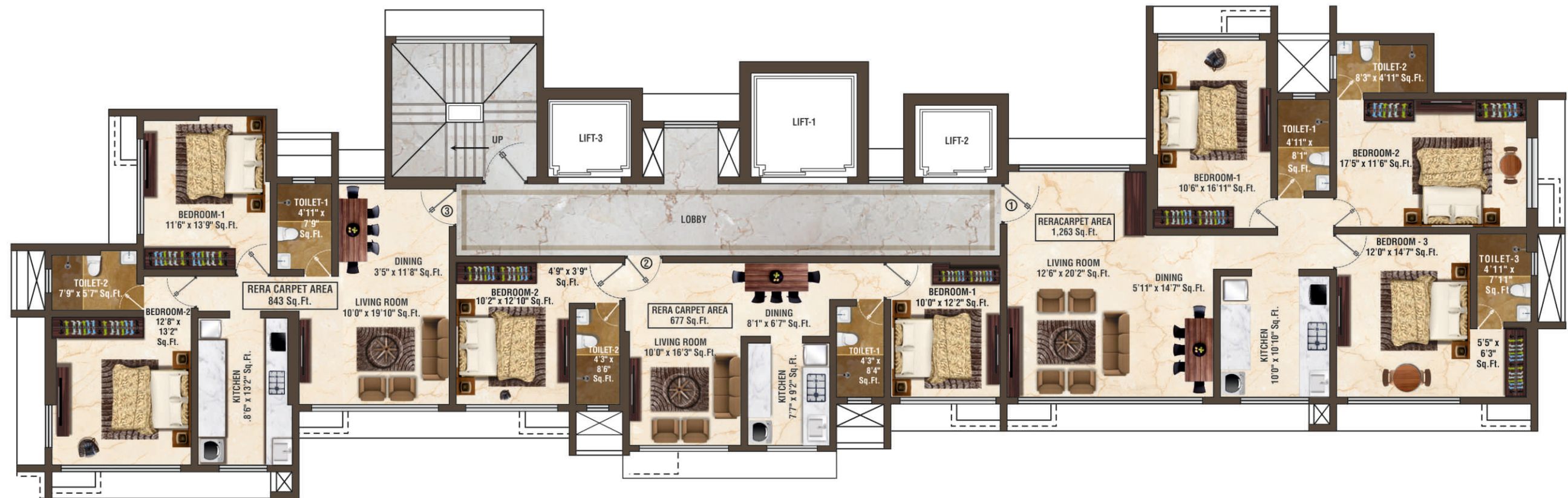
**7th Floor Boutique Gymnasium**





**2 High Speed & 1 Service Elevator**



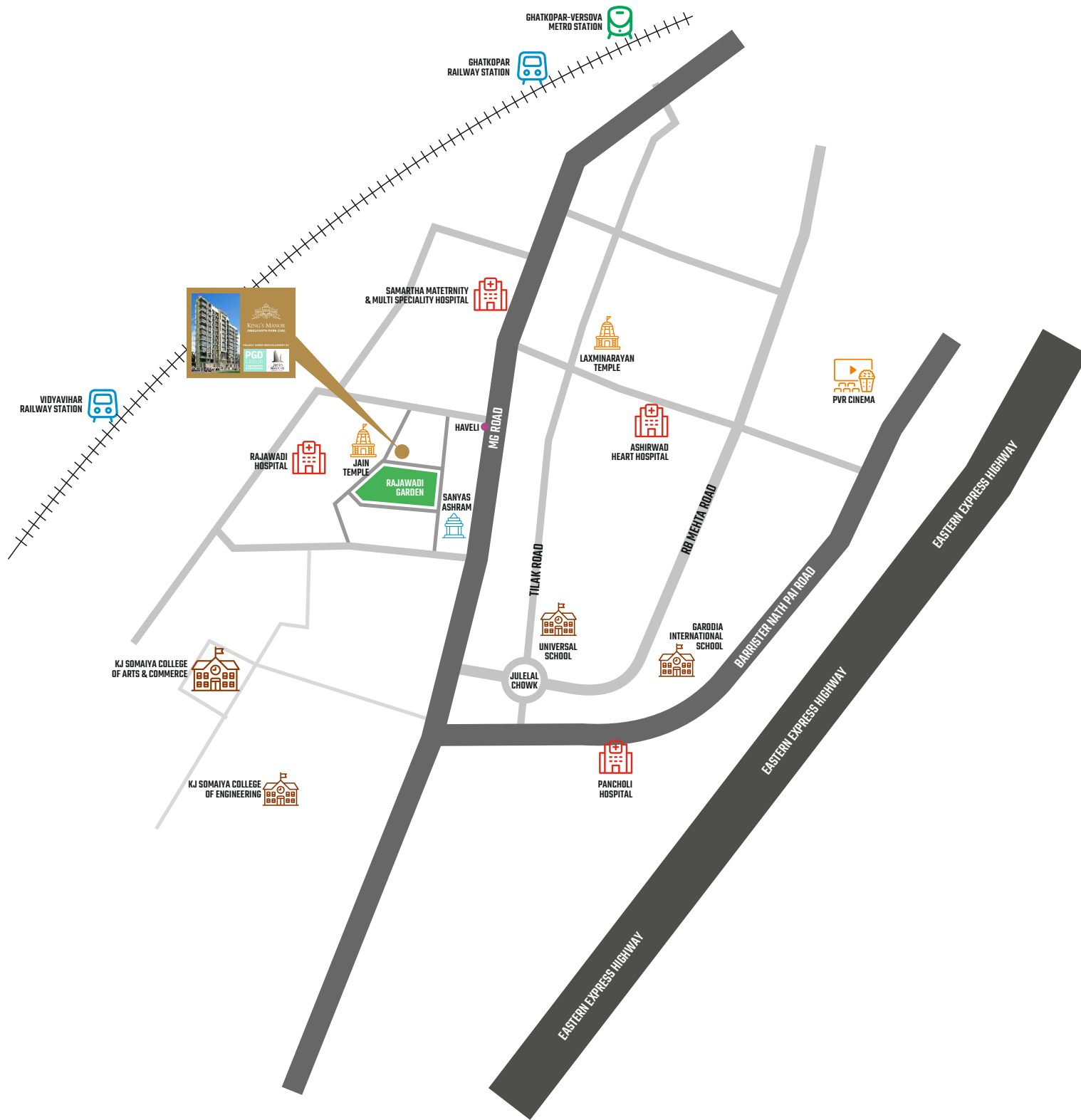


## RAJAWADI GARDEN

# Floor Plan

\* Jodi flat available for purchase. Kindly check on our website : <https://www.pgdgroup.com/kingsmanor/>





## Neelkanth Park Nearby Landmarks



### TRANSPORTATION

- 10 Minutes:**  
Sion Chembur Link Road  
Eastern Express Highway  
Eastern Freeway
- 30 Minutes:**  
Airport
- 5 Minutes:**  
Ghatkopar Station  
Vidyavihar Station  
Ghatkopar Versova Metro Station
- 10 Minutes:**  
Kurla Terminus



### TEMPLES

- Opposite:**  
Jain Derasar
- Walking distance from:**  
Laxminarayan Temple  
Sanyas Ashram  
Ram Temple



### EDUCATION & MEDICAL

- Walking distance from:**  
Somaiya College & School  
Garodia International School  
Universal School
- Private & Government Hospitals
- 10 Minutes Drive:**  
RBK Internation School



### MALLS & COMMERCIALS

- 10 Minutes:**  
Pheonix Mall  
R-City Mall Kurla  
Jio World  
Multiplexes
- 20 Minutes:**  
Bandra Kurla Complex  
Saki Naka  
Andheri
- 40 Minutes:**  
CST



**PROJECT UNDER REDEVELOPMENT BY**



**Group Concerns**



---

**Corporate Address:**  
5, Neelkanth Market,  
M.G. Road, Ghatkopar (E)  
Mumbai - 400077. India

**Contact:**  
+91-9260300600  
admin@pgdgroup.com

**Site Address:**  
Neelkanth Park CHSL,  
Rajawadi Garden.

---



This project has been registered via MahaRERA registration number P51800056326 and is available on website <https://maharera.mahaonline.gov.in/> under registered projects.

website : <https://www.pgdgroup.com/kingsmanor/>